



MAN B&W ENGINE SERVICES

We keep your engines running

COMPANIES

CROATIA*
Rijeka

BULGARIA*
Varna

ROMANIA*
Constanta

TURKEY
Istanbul

SLOVAKIA
Bratislava

BALTICS
Klaipėda

CHINA
Shanghai

PBM GROUP

CONTACT
sales@pbm.hr

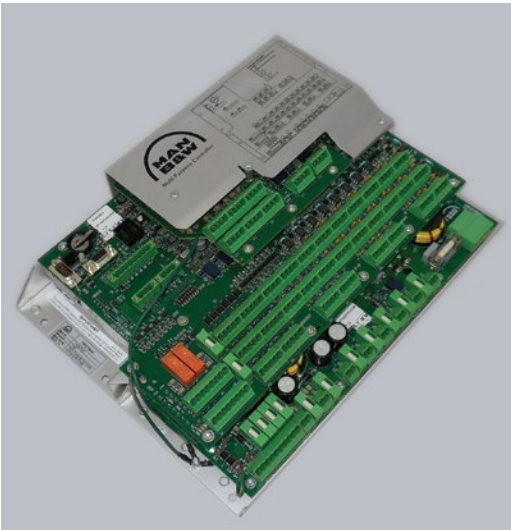


- Marine/industrial engines and engine control systems specialists
- Woodward Authorized Independent Service Facility [AISF]*
- ISO9001:2015 certified, Lloyd’s Register Quality Assurance

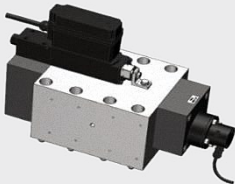
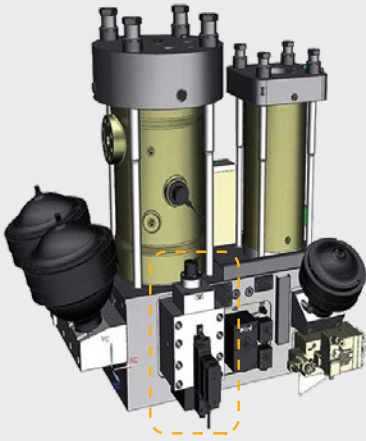
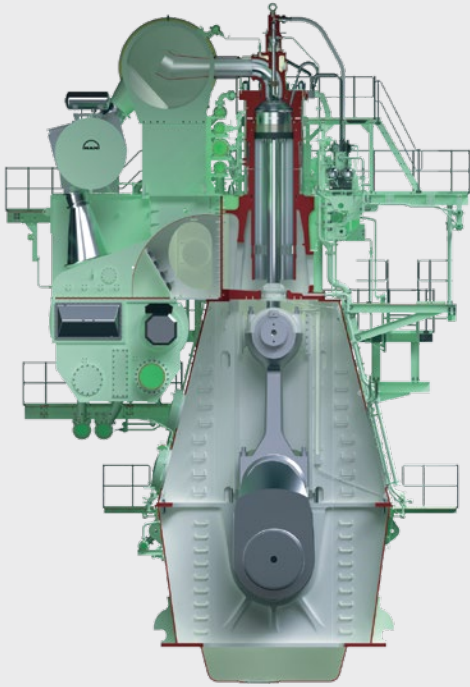
MAN B&W MC & ME-B/C ENGINES / AUTOMATION SERVICES SCOPE

AUTOMATION / MAINTENANCE / COMMISSIONING

- MAN Marine Engines Automation and Control Systems Maintenance:
 - ▶ 2-Stroke MC: 35MC-42MC-46MC-50MC-60MC-70MC-80MC-90MC-98K
 - ▶ 2-Stroke ME: 35ME-46ME-50ME-60ME-70ME-80ME- 90ME-98ME
- MAN ALFA System Electrical Maintenance/Commissioning/ Troubleshooting of AT2/AT2A/AT2000/AT3000 CPP Systems *
- CPP Hydraulic System Maintenance/Commissioning/Troubleshooting
- REINTJES Gear Box Commissioning/Troubleshooting
- Maintenance/Commissioning/Troubleshooting of MAN Genset Types*: 16/24-21/31 - 27/38 - 23/30 - 28/32 - 32/40 - 48/60 - 51/60
- Maintenance/Commissioning of MAN Marine Engine Automation and Control Systems*:
 - ▶ 4-Stroke: 21/31 - 27/38 - 32/40 - 32/44CR - 48/60 - 58/64 - 51/60DF
 - ▶ 2-Stroke: 35MC - 42MC - 46MC - 50MC - 60MC
- Alfa Lube Electrical Control System Retrofit/Maintenance/ Troubleshooting
- 2-Stroke Main Engine Pneumatic System Overhaul/Troubleshooting
- AT 2000 - Pitch Control System Upgrade/Retrofit*
- MAN Genset Control System Retrofit/Troubleshooting
- MAN PrimeServ Assist Installation*
- Supervision of Propeller – Shaft – Hydraulic Coupling Maintenance/ Installation; 5 Years PMC Maintenance



* Software is Owner’s Supply



MAINTENANCE & REPAIR

GENERAL MECHANICAL SERVICES:

- Engine Inspection and Overhaul - cleaning, inspection and overhaul of cylinder and cylinder head, pistons and piston rings, main bearings, rod end bearings, thrust bearings, crankshaft, exhaust valves, starting valves, starting air distributor, stuffing box, crosshead, chain
- Alfa Lube Electrical Control System Retrofit/Maintenance/Troubleshooting
- Fuel Supply System Overhaul
- Fuel Injection System timing adjustments for MAN B&W and Wartsila/ Sulzer 2-stroke engines

SPECIFIC SERVICES FOR MAN B&W ME-B/C:

- Hydraulic Cylinder Unit
 - ▶ Fuel Oil Pressure Booster Overhaul
 - ▶ Exhaust Valve Actuator Overhaul
 - ▶ Cylinder Lubricator Overhaul
 - ▶ Accumulators Maintenance and Overhaul
 - ▶ FIVA/ELFI Onboard Verification
 - ▶ FIVA/ELFI Inspection, Overhaul and Full-Scale Testing
 - ▶ Proportional Directional Control Valve Replacement and Connection in Terminal Box
 - ▶ Distributor Block Cleaning
- Hydraulic Power System
 - ▶ Gear/Motor-driven HPS Pumps Replacement with New/Reconditioned
 - ▶ Gear-driven HPS Pumps Upgrade HS3 to HS4
 - ▶ Distribution Block Control Valve Replacement and Adjustment
 - ▶ Accumulators Maintenance and Overhaul
 - ▶ Hydraulic Hose Replacement
- Air Distributor Overhaul
- Starting System Maintenance/Supervision/Troubleshooting
- 2-Stroke Main Engine Pneumatic System Overhaul/Troubleshooting
- Main and Slow Turning Actuator Overhaul
- Tacho System Maintenance, Overhaul and Function Tests

COMMISSIONING

REMOTE & ON-SITE SUPPORT AND TROUBLESHOOTING